

Simulation Partner Integration

Datasheet

Altia Connects To:

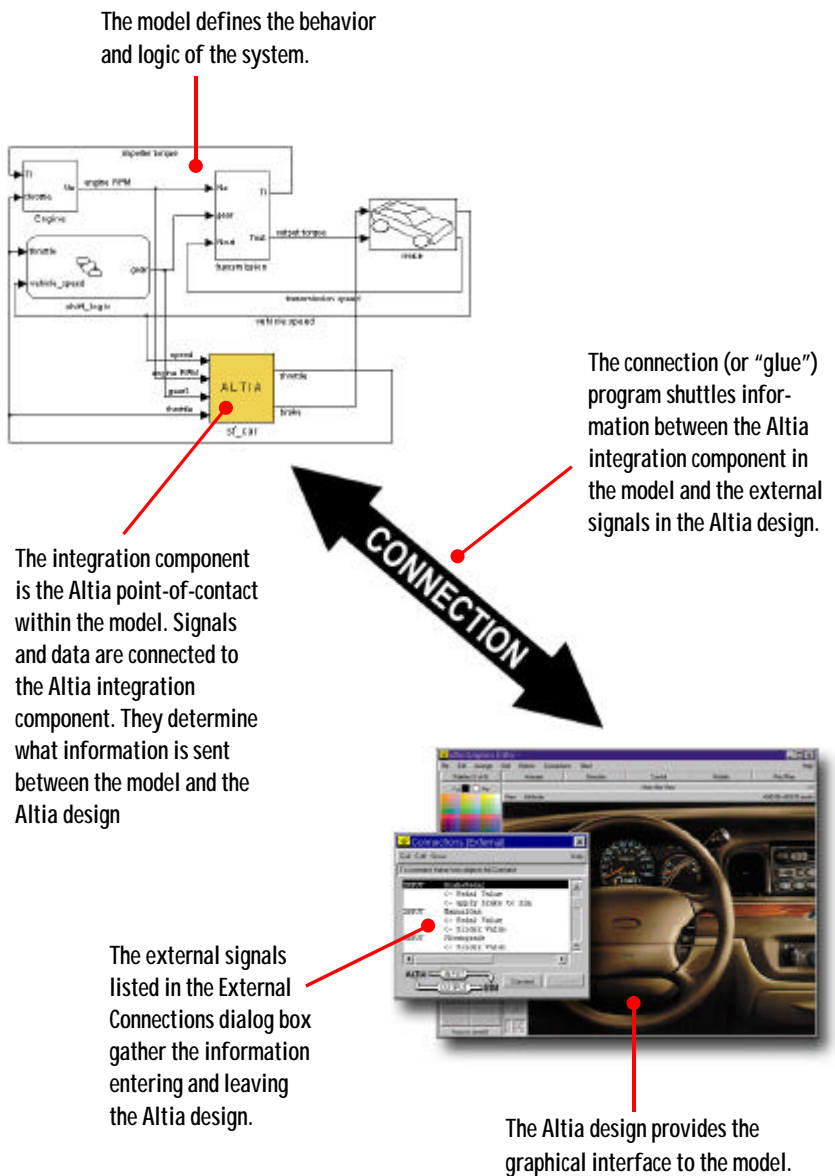
- Wind River Matrix_x & BetterState
- The MathWorks Simulink & Real-Time Workshop
- I-Logix Statemate & Rhapsody
- ARTiSAN Real-time Studio
- Mentor Seamless

Introduction:

Altia Connection packages allow you to link your Altia Design or Altia FacePlate graphics to leading simulation software tools. You can send and receive events with a simple point-and-click connection dialog. It's simple, and Altia does all the connection work for you.

Communication Protocols:

- TCP/IP Sockets
- DDE
- Domain Sockets



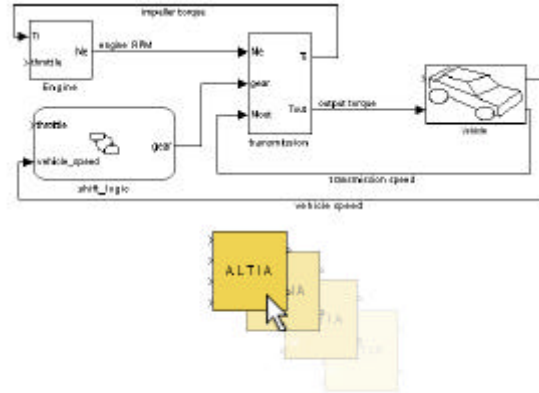
For more information contact:

Altia, Inc.
 5030 Corporate Plaza Drive
 Colorado Springs, CO 80919
 Telephone: 719-598-4299
 Fax: 719-598-4392
 Web: www.altia.com
 Email: info@altia.com

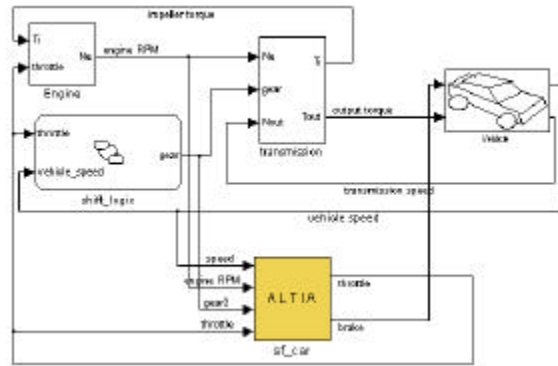
Connection Process

The process of connecting your Altia graphics to your simulation model is simple.

- 1 Within the simulation tool, drag an Altia integration component into the model.



- 2 Connect the signals to the integration component to define the inputs and outputs.



- 3 The Altia "block" then offers functionality to send signals to Altia and open an editor session.

- 4 Within Altia, connect components to external signals.

